

# ReNew

## RECOVERING MOTHERS WITH NEWBORNS

**ReNew** is a signature prevention program of Bethany Christian Services that supports expectant mothers with a history of opioid use as well as other substance use. **ReNew** integrates evidence-based specialized case management models and practices across formal systems of **child welfare**, **criminal justice**, and **substance abuse** who are also incarcerated. **ReNew** prepares them before and after release from prison as well as before and after the birth of their child.



### STAFF

WOMEN'S ADVOCATE &  
PEER SUPPORT



### SERVICE

SPECIALIZED CASE  
MANAGEMENT



### CASELOAD

NOT TO EXCEED 30  
WOMEN AND THEIR  
CHILDREN



### SERVICE PERIOD

PRENATAL UP TO 32 WEEKS  
THROUGH ONE YEAR  
POST-DELIVERY



## ReNew engages expectant mothers and their newborns to attain positive, life-changing behavior

### Communities achieve great impact by reducing:

- Risk associated with prenatal substance exposure
- Maternal relapse of substance abuse
- Intergenerational patterns of family disruption
- Newborns entering foster care

### Mothers and children benefit by increasing:

- Health of substance-exposed infants
- Access and engagement in treatment/MAT
- Parenting skills and attachment
- Family Stability
- Family resilience, self-sufficiency and productivity

# The need for innovations in addressing substance use impact on women, children, and families has never been greater:

- Substance use effects 1 in every 12 pregnancies.<sup>1</sup>
- A child is born exposed every 15 minutes.<sup>1</sup>
- Increased risk of death to baby and mother
- Exposure has increased by 383%



ReNew is rooted in the belief that vulnerable parents, including expectant parents, with a history of substance use and incarceration can recover. Many of these parents have experienced significant trauma, with few social supports or access to professional support, including treatment. These individuals have a high probability of failing compliance-driven programs.

Individuals are best nurtured in relationships that promote accountability, with access to medically-based treatment and evidence-based supports that enhance positive parenting, healthy parent-child attachments, engagement in treatment, sustainable integration to community, and intergenerational recovery.

## The model

The TASC Specialized Case Management model is essential in structuring ReNew's success. It connects people to the services they need and serves as a bridge between the referring system and treatment in the community.



Connecting women to treatment and recovery support in the community

<sup>1</sup> America's Opioid Crisis: The Unseen Impact on Pennsylvania Children. [https://www.aap.org/en-us/advocacy-and-policy/federal-advocacy/Documents/Opioid-StateFactsheets/opioid\\_fs\\_pennsylvania.pdf](https://www.aap.org/en-us/advocacy-and-policy/federal-advocacy/Documents/Opioid-StateFactsheets/opioid_fs_pennsylvania.pdf).

<sup>2</sup> Bronson, J.; Stroop, J.; Zimmer, S. & Berzofsky, M.; Drug Use, Dependence, and Abuse Among State Prisoners and Jail Inmates, 2007—2009, Bureau of Justice Statistics, Office of Justice Programs, U.S. Department of Justice (2017), <http://www.bjs.gov/index.cfm?ty=pbdetail&iid=5966>.

<sup>3</sup> Substance Abuse and Child Welfare Resources, retrieved from <http://www.ncsl.org/research/human-services/substance-abuse-and-child-welfare-resources.aspx>

## Identification and screening:

### 100% identification and screening for critical needs and strengths

- Pregnancy verification
- 4Ps Drug Screening
- Voluntary participation in ReNew

## Assessment:

### Science-based tools for assessment

- Edinburgh Postpartum Depression Scale
- Abuse assessment screen
- Finding your ACE (Adverse Childhood Experiences) score
- LSI-R risk and needs assessment as it relates to correct justice case management - CJ model only
- Recovery capital scale and goal/service planning (RCS)

## Referral/placement into treatment:

### Service Coordination

- Children Protective Services
- Recovery Services

- Adult Probation and Parole Services
- Behavioral healthcare provider
- Housing/shelter resources
- Prenatal care provider
- Home-based educators

## Monitoring, motivating, advocating, and guiding:

### Ongoing specialized case management

Case management is a continuum of support from pre-release through post-release and up to a year after the birth of the child. At various milestones, case management will utilize evidence-based practices:

- Motivational Interviewing (MI)
- Trust-Based Relational Intervention (TBRI®) Simplified

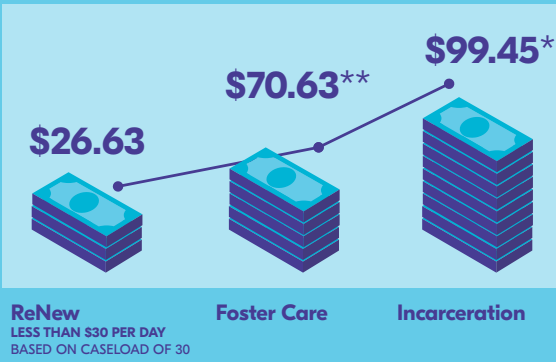
## Recovery support:

### Certified Peer Specialist

- Health
- Home
- Purpose
- Community

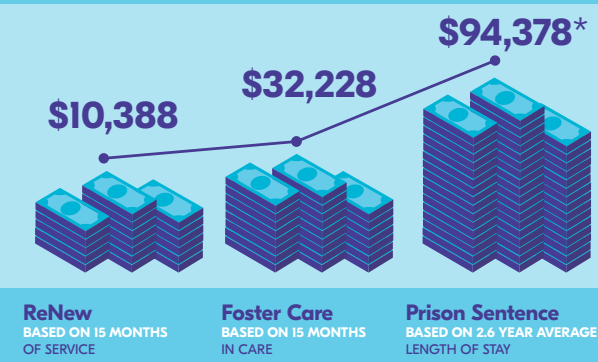


## Daily Costs



\*Federal Register, The Daily Journal of the United States, April 30, 2018

## Overall Costs



\*\*Adoption Advocate, NCFA, May 2011



A 75% Success Rate will yield a Social Return on Investment of 145%.



Other savings include reduction in treatment costs and rearrest and victim impact costs



## ReNew Collaborative

Bethany has initiated the ReNew Collaborative that ensures agencies involved in reentry and recovery work together to offer comprehensive support to pregnant and parenting women in our community.



**Bethany**

**DSS** South Dakota  
Department of  
Social Services

**For more information, contact:**

**Dione Krush**

ReNew Women & Children's  
Advocate (605) 390-8810  
dkrush@bethany.org

**Heidi Thomas**

ReNew Women & Children's  
Advocate (605) 251-7998  
hthomas@bethany.org