

# Bethany<sup>®</sup>

CHRISTIAN SERVICES

ANNUAL REPORT 2019





## Our world is facing unprecedented challenges and transformative moments.

In these days of uncertainty and change, Bethany remains motivated by our faith and united in our mission.

Hundreds of millions of children around the world are unprotected and poorly defended. That is simply unacceptable. As Christians, we put our trust in God and our passion into the ways we can be the hands and feet of Jesus.

Your support enables Bethany to demonstrate Christ's love to children and families within our own communities and around the world.



Together, we can change the world through family.



Chris Palusky  
Bethany's President and CEO

# 234,746

total lives  
impacted  
in 2019

### READ MORE

LEARN MORE ABOUT  
BETHANY'S GLOBAL  
IMPACT IN 2019 ONLINE

[Bethany.org/AnnualReport](https://Bethany.org/AnnualReport)

### Results of General Operations

<b>OPERATING REVENUE</b>	<b>2019</b>	<b>2018</b>
Service revenue	\$113,499,000	\$103,189,000
Contributions	17,000,000	19,064,000
Investment & other	6,891,000	(1,020,000)
<b>Total Operating Revenue</b>	<b>\$137,390,000</b>	<b>\$121,233,000</b>
<b>OPERATING EXPENSES</b>	<b>2019</b>	<b>2018</b>
Program services	\$110,869,000	\$105,278,000
Management & general	15,094,000	11,626,000
Fundraising	6,252,000	6,376,000
<b>Total Operating Expenses</b>	<b>\$132,215,000</b>	<b>\$123,280,000</b>
Provision for Future Services	\$5,175,000	\$(2,047,000)



# Building Stronger Families

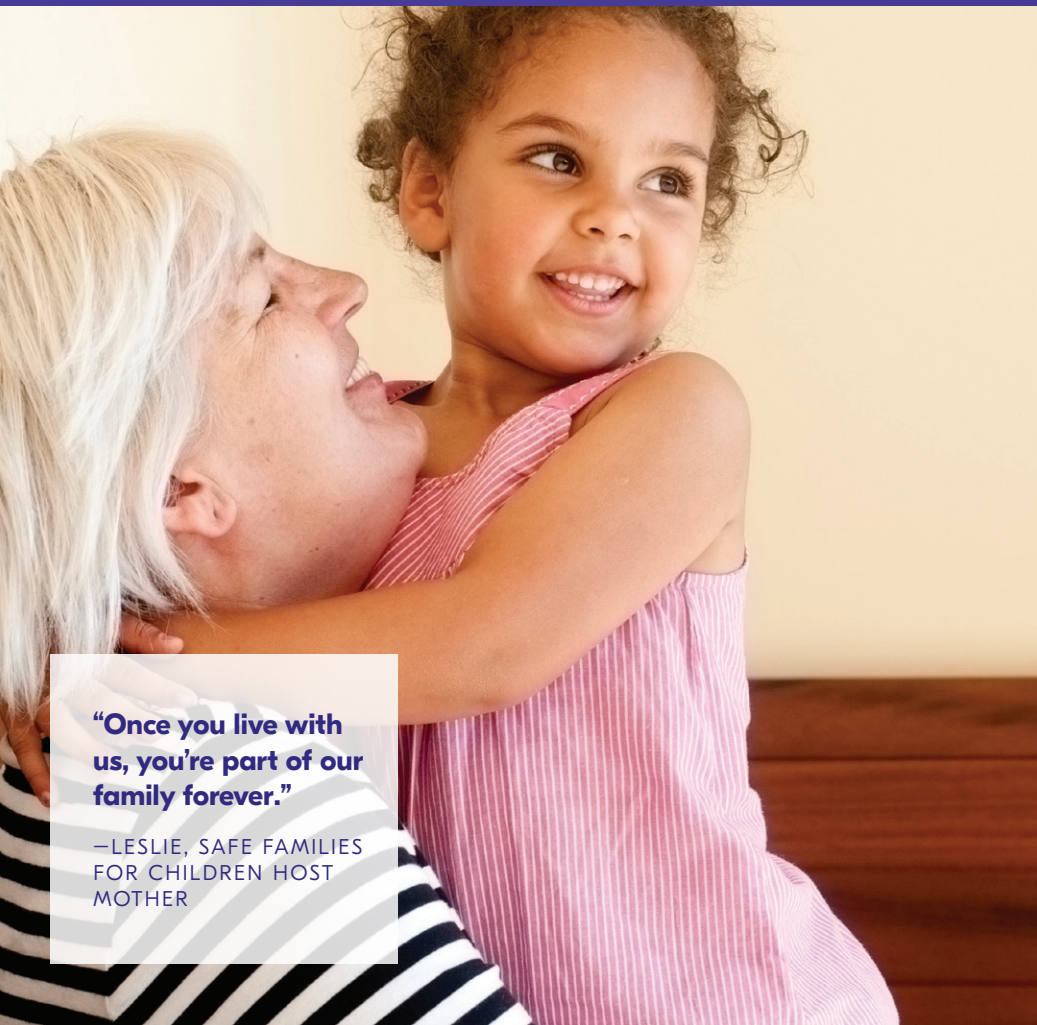
KEEPING FAMILIES SAFELY TOGETHER

Right now in the U.S., more than 400,000 kids are in foster care, 100,000 children are waiting for adoption, and about 40% of parents facing an unexpected pregnancy choose abortion.

When expectant parents feel they can't care for their child, financial challenges are often the reason. When older children bounce around in the foster care system for 5–10 years, they've often lived in 20–50 different homes. And when 18-year-olds leave foster care without the support of a family, they're often at elevated risk of incarceration, substance misuse, or unexpected pregnancy.

That's simply unacceptable. That's why, in the U.S., we begin our work with evidence-based programs designed to keep families together. Homebuilders and Safe Families for Children help parents establish a network of support and a strong family foundation, after a crisis occurs.

When children enter foster care, we provide loving foster families to keep kids safe until they can reunite with their families in a safer environment. And, when reunification isn't possible, we find loving, lasting families for children through adoption.



**“Once you live with us, you're part of our family forever.”**

—LESLIE, SAFE FAMILIES FOR CHILDREN HOST MOTHER

# 114,365

total lives impacted in 2019

# 5,033

children served through Safe Families for Children

# 8,417

children and families served through foster care

# 17.6%

increase in family preservation services

## KEY PROGRAMS

**Safe Families for Children**

**Foster care**

**Adoption**

**Pregnancy counseling**

## NEED

**45%** of pregnancies in the U.S. are unintended

**26,000** of the children waiting for adoption leave foster care at 18 without a family

**30%** of former foster youth become homeless or incarcerated

## READ MORE

LEARN MORE ABOUT LESLIE AND READ HER STORY ONLINE

[Bethany.org/Leslie](https://www.bethany.org/Leslie)





**“When I arrived in the U.S. alone, Lois became my family here. And now she’s family for my brother too. She loves us both as a mom would.”**

—JOSE, UNACCOMPANIED MINOR

## Refugee & Immigrant Services

### REFUGEES DESERVE TO BE SAFE, LOVED, AND CONNECTED

More than 79 million people worldwide have been forcibly displaced from their homes due to conflict, violence, persecution, or human rights violations, according to the United Nations Refugee Agency (UNHCR). At Bethany, our faith compels us to act on behalf of these vulnerable people, the vast majority of whom are women and children.

For refugees fleeing danger, the search for safety can be extremely challenging. And too often, people become numbers in a system that can feel impossible to navigate. That’s why we guide, protect, advocate for, and support refugees. In the U.S., we offer resettlement and continued support services in strategic locations.

Connection is the thread that runs through our refugee and immigrant services. For refugee children resettled in the U.S. without a family, we connect them with foster families where they find love, support, and a home base that continues into adulthood. For unaccompanied kids seeking protection in the U.S., we connect them with short-term foster families until we can reunite them with a family member. Through our post-release services, we continue supporting refugee and asylum-seeking families through a safe and smooth transition and connection into the community.

# 23,378

total lives impacted in 2019

# 2,452

families supported in reunification

# 21

refugee women were assisted in establishing their own childcare businesses

# 667

children cared for by 266 transitional foster care families

### KEY PROGRAMS

Refugee foster care

Transitional foster care

Refugee resettlement

Refugee employment

Trafficking victims support

Trauma counseling

Family reunification

### NEED

**79.5** million forcibly displaced people worldwide, as of 2019

**29.6** million refugees—the highest ever seen

**45.7** million internally displaced people

### READ MORE

LEARN MORE ABOUT JOSE AND READ HIS STORY ONLINE

[Bethany.org/jose](https://bethany.org/jose)

# Global Family Care

## EMPOWERING FAMILIES AROUND THE WORLD

Violence, disease, persecution, and natural disasters can jeopardize a family's ability to stay together. And when extreme poverty is paired with these stressors, families are disrupted.

Children without families are at greater risk for homelessness, trafficking, unplanned pregnancy, and developmental delays. According to UNICEF, nearly 90% of the world's orphans have at least one living parent.

In response to the worldwide orphan crisis, we connect children in need with families in their country of origin. In more than a dozen countries, we've partnered with local churches and government to recruit and train families to foster and adopt. Family-based care offers a proven solution to protect vulnerable children around the world.

Our mission transcends borders. Through specialized training, we also work with non-governmental organizations, local governments, and other partners to influence positive change. Our work is tailored for each country, empowering people right where they live.

# 97,003

total lives impacted in 2019

# 11.1%

increase in individuals served through Global Services

# 35%

increase in lives impacted through in-country adoptions

# 40

international partner organizations

## KEY PROGRAMS

**Adoption**

**Foster care**

**Family preservation and empowerment**

**Refugee and humanitarian services**

## NEED

**140+** million orphans, meaning they've lost one or both parents


**700+** million people live in extreme poverty

**1 of 5** children live in extreme poverty. Poverty affects children disproportionately

## READ MORE

LEARN MORE ABOUT SAMIYAH AND READ HER STORY ONLINE

[Bethany.org/Samiyah](https://Bethany.org/Samiyah)



**“Being taught about parenting is one of the precious privileges that I got from [Bethany] and this refugee camp.”**

—SAMIYAH, MOTHER



**Demonstrating the love and compassion of Jesus Christ by protecting children, strengthening families, and empowering youth through quality social services.**

**CORPORATE HEADQUARTERS**

901 Eastern Ave NE, PO Box 294  
Grand Rapids, MI 49501-0294  
(800) BETHANY

